

# FONDAZIONE OPERE LAICHE PALATINE

Fondazione di diritto privato - DPR 29.10.2010 n. 263

Presidente Dott. Michele Virgilio

## ACQUAVIVA DELLE FONTI (BARI) EX RICOVERO DI MENDICITÀ UMBERTO 1°

Edificio tutelato ai sensi dell'art. 10 del D.Lgs 42/2004

Proprietà FONDAZIONE OPERE LAICHE PALATINE

## PROGETTO DI POLO PLURIFUNZIONALE INTERGENERAZIONALE

Progetto architettonico

Dott. Ing. A. Bruno  
Dott. Arch. G. Fraccascia

Consulenza impiantistica

Per. Ind. Biagio Montesano

Consulenza geologica

Dott. Geol. Vincenzo Casucci

Consulenza archeologica

Dott. Archeologo Lorella Lamanna

Consulenza conservazione  
apparati decorativi

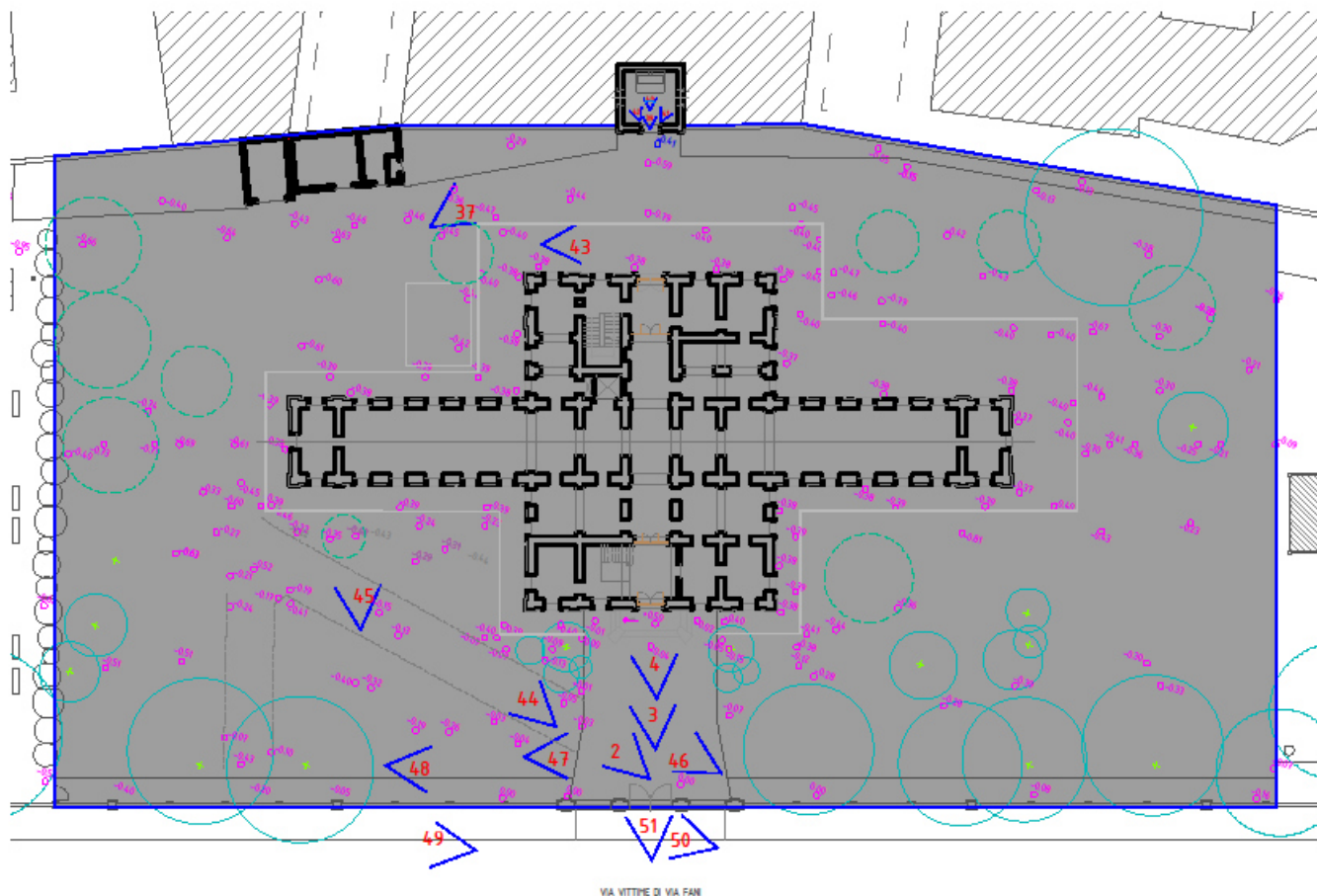
Restauri del Sole

**RESPONSABILE DEL PROCEDIMENTO** Dott. Ing. G. Didonna

DOCUMENTAZIONE FOTOGRAFICA

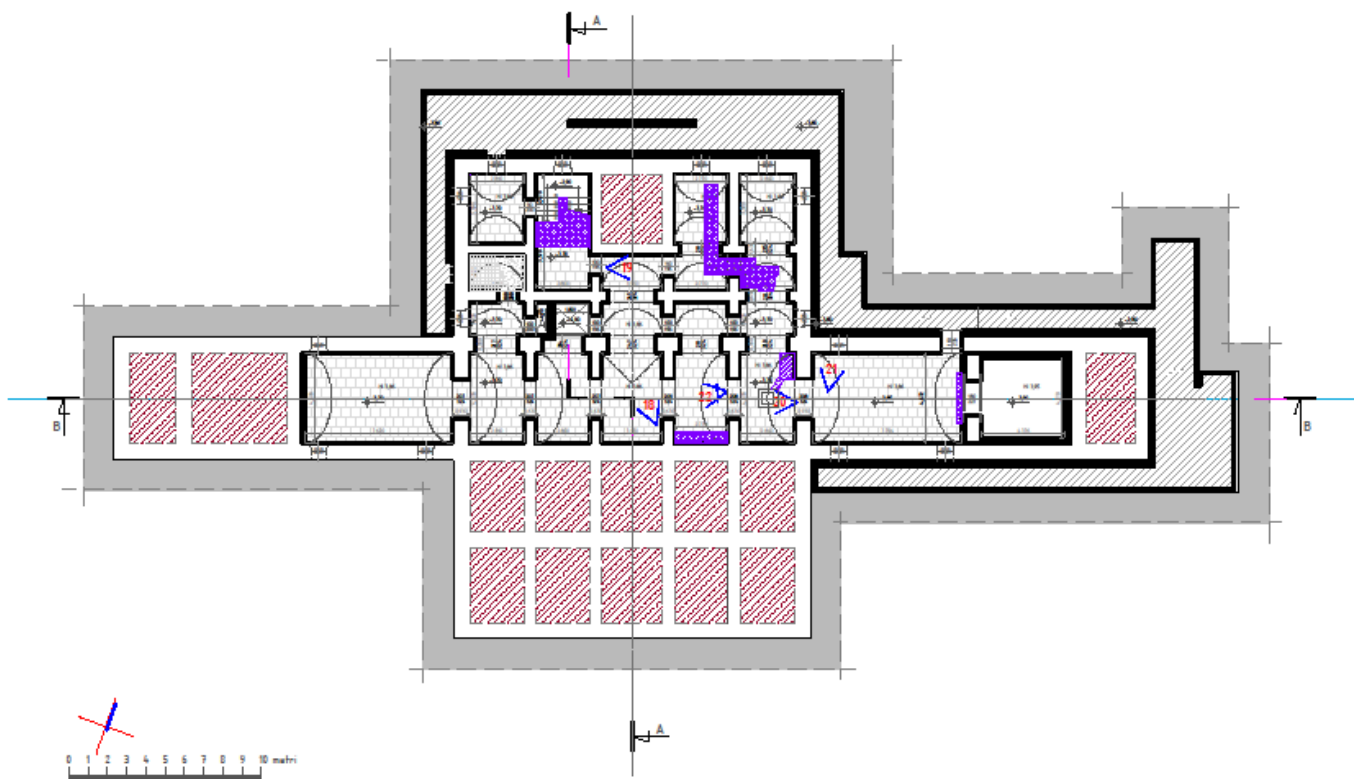
A.13

## stralcio pianta piano terra-giardino



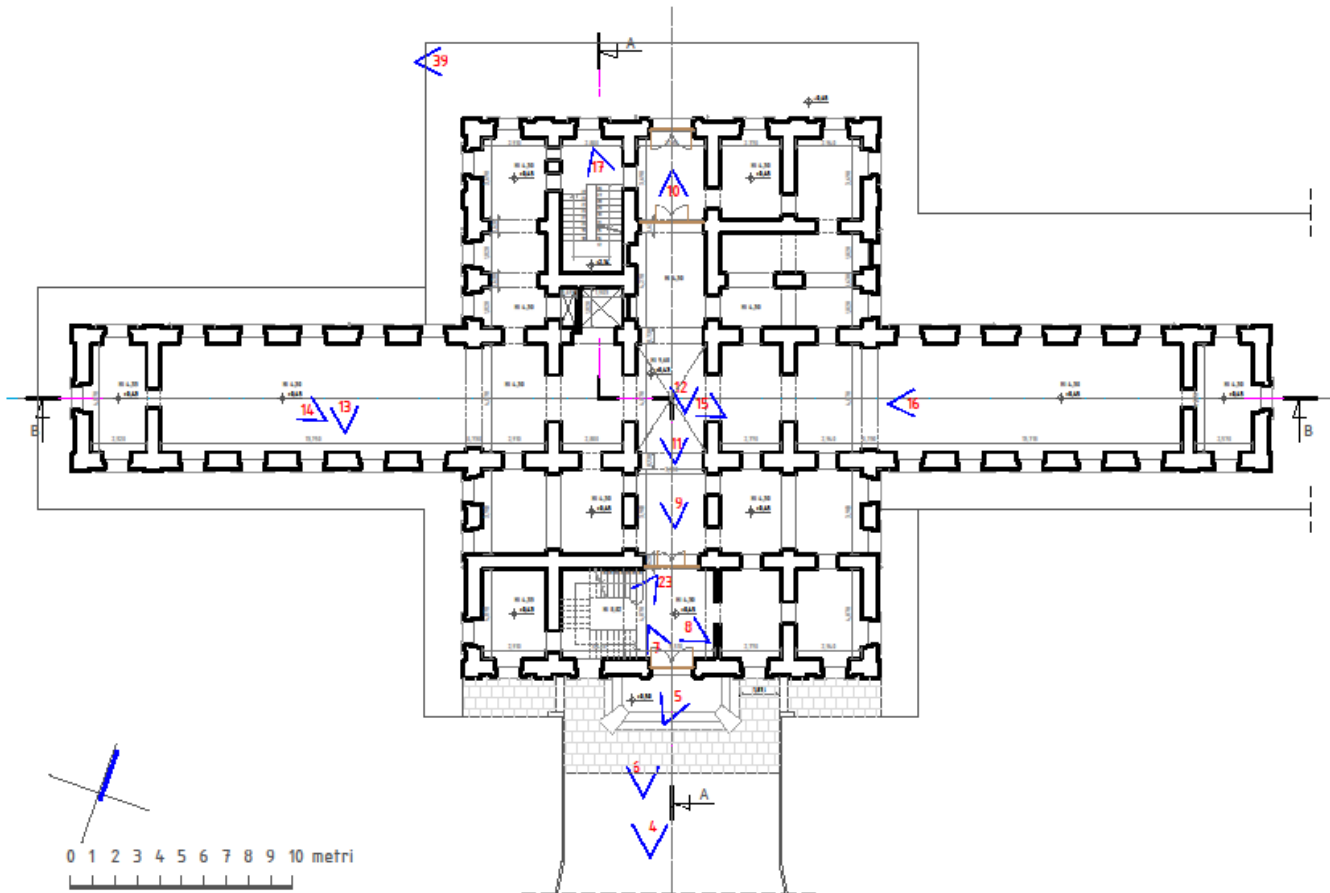


# pianta piano seminterrato

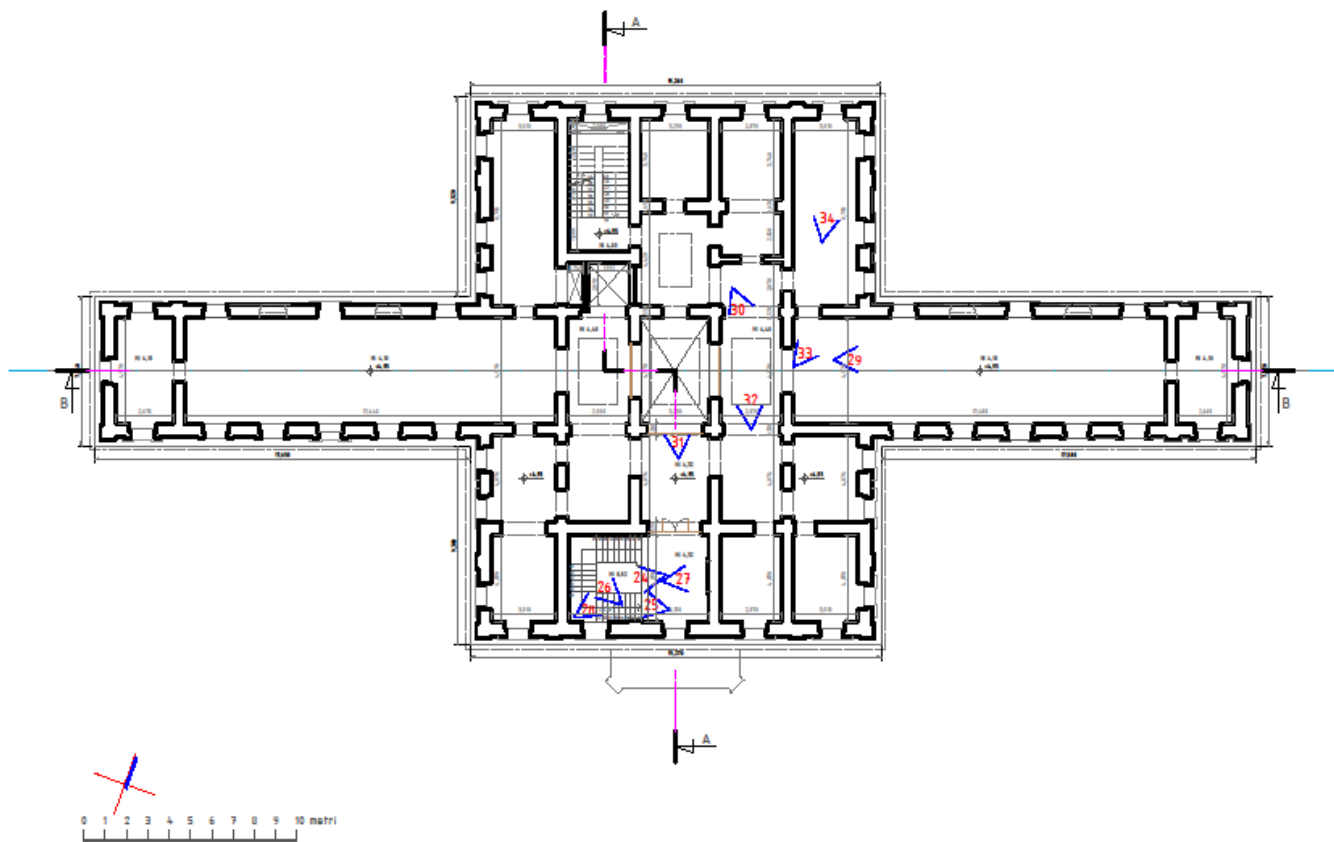




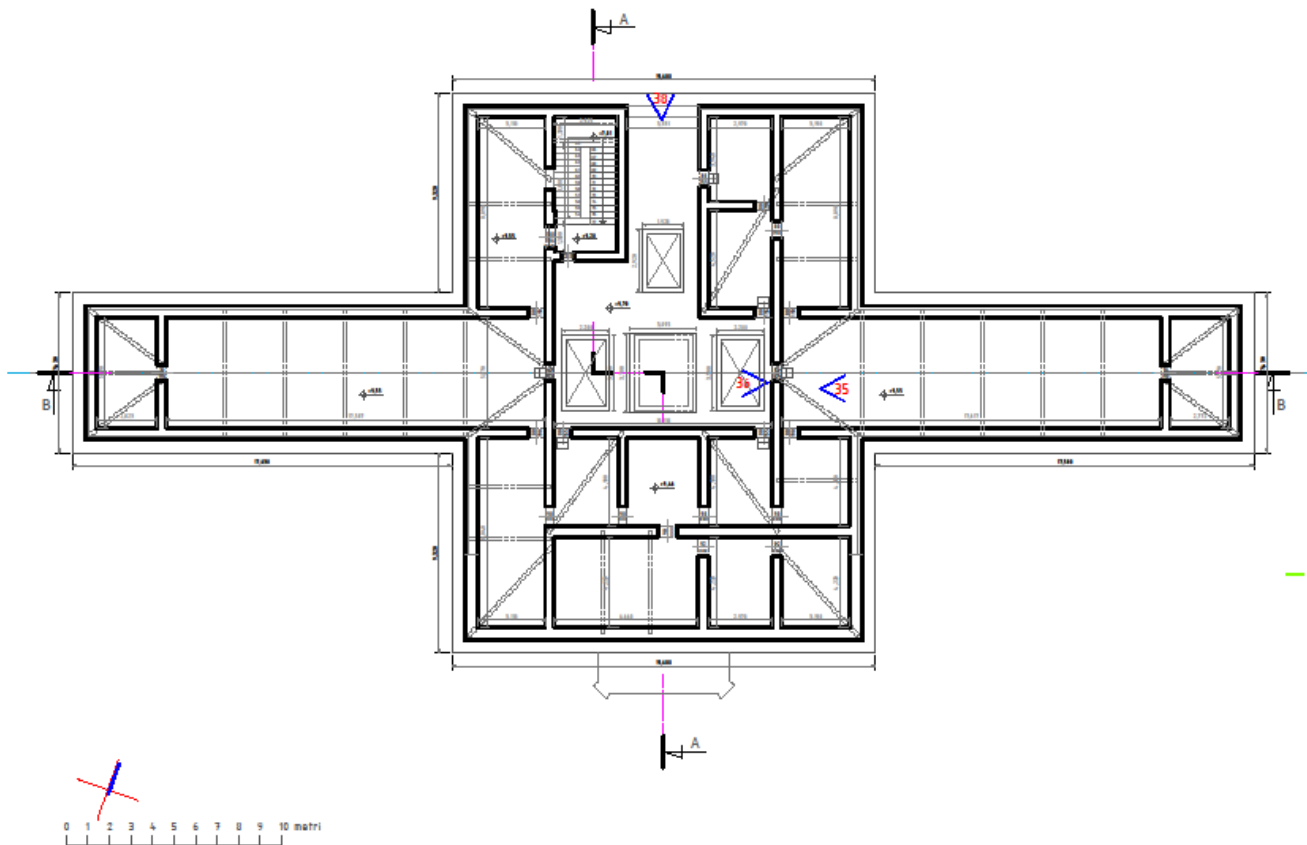
pianta piano terra-rialzato



# pianta primo piano



# pianta piano sottotetto





1

2





3



4



5





6



7







9



10

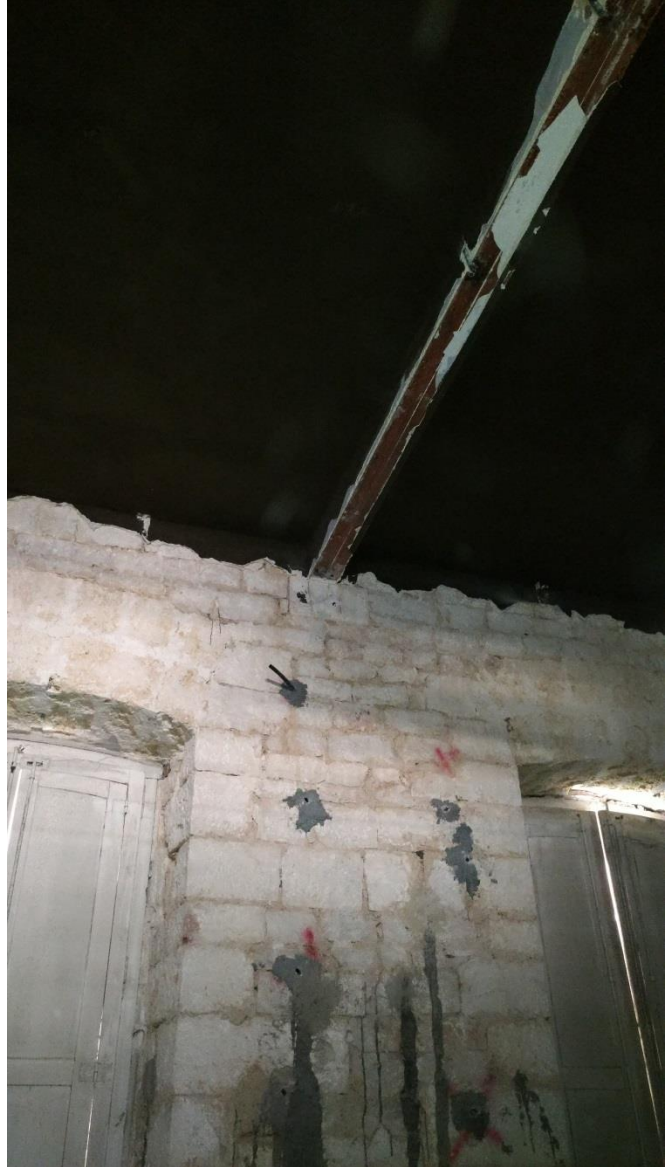




11

12

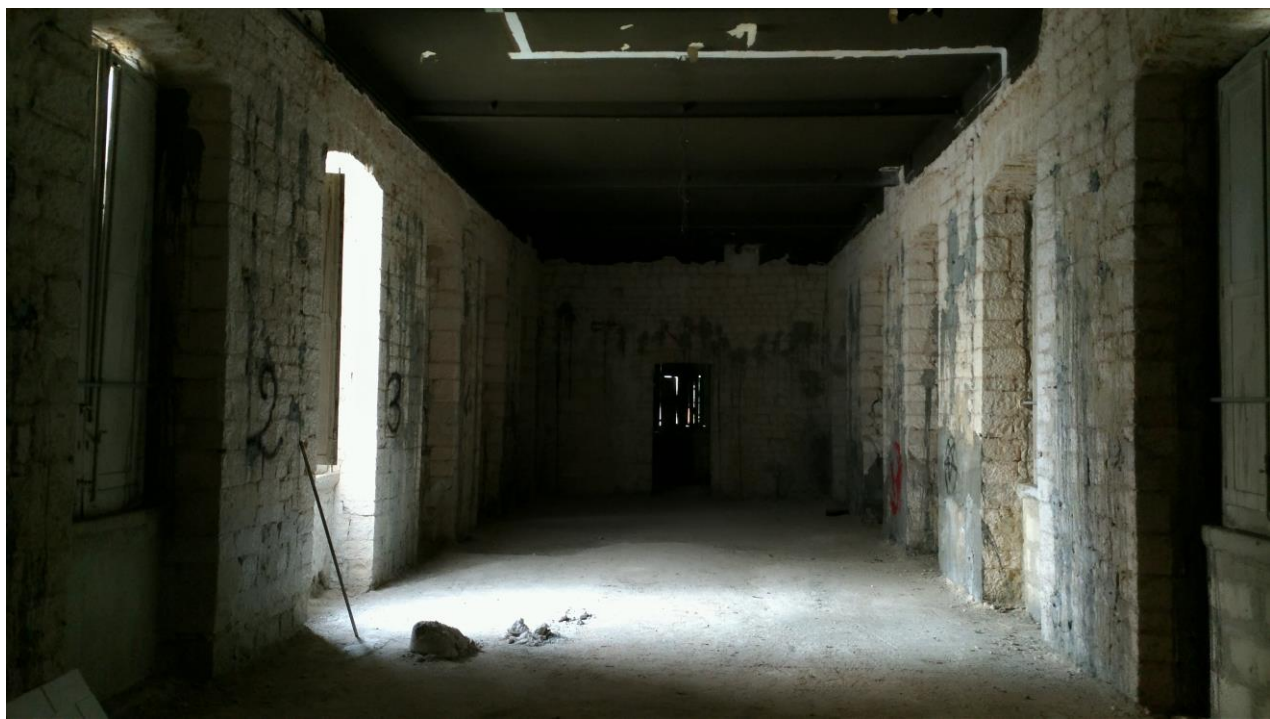
13



14









17



18





19



20



21

22



23



24

25



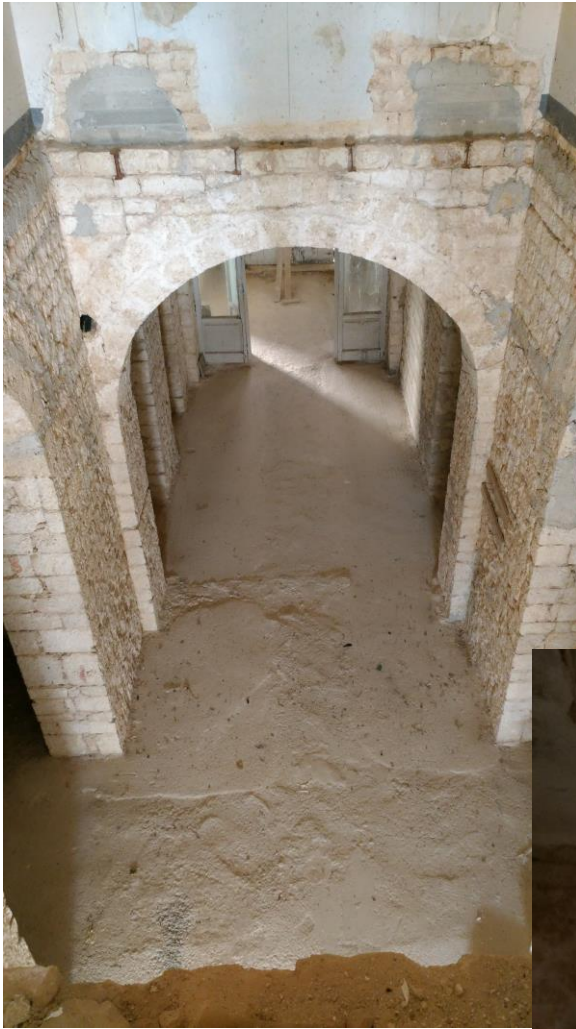
26











31

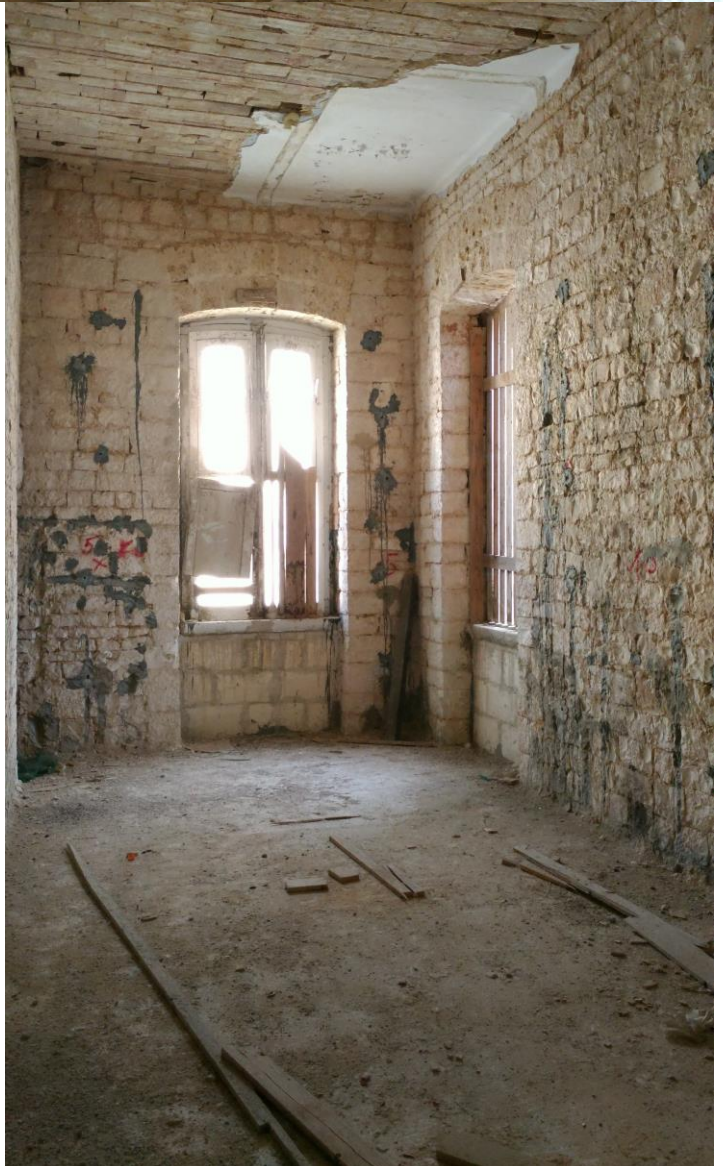


32

33



34



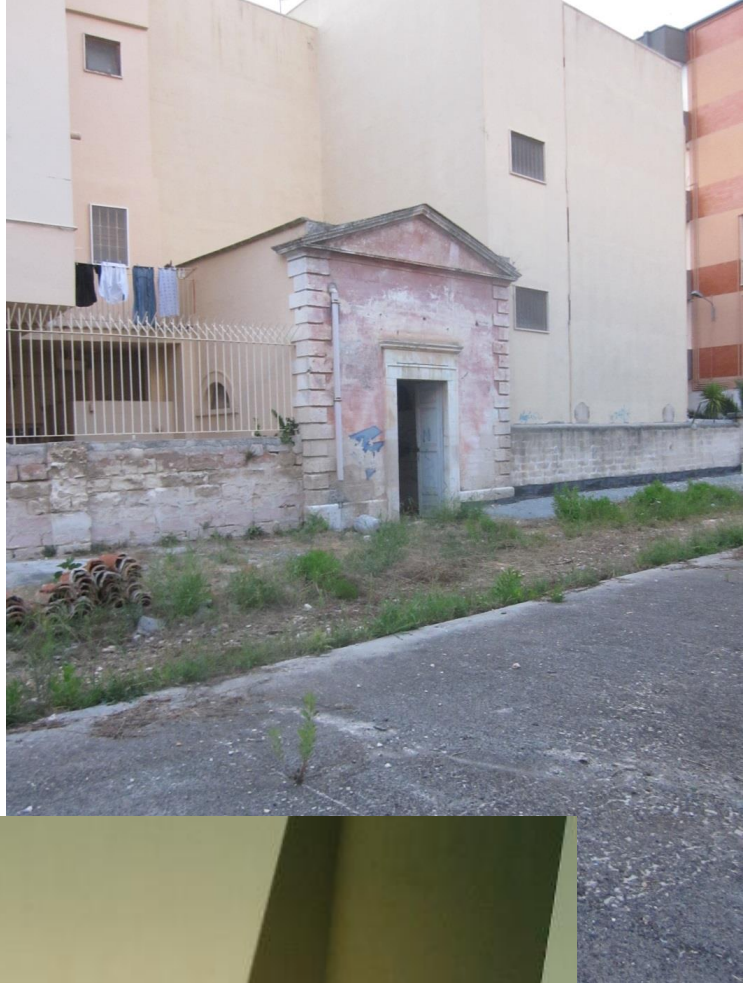




35



36



37



38



39



40





41



42





43



44



45

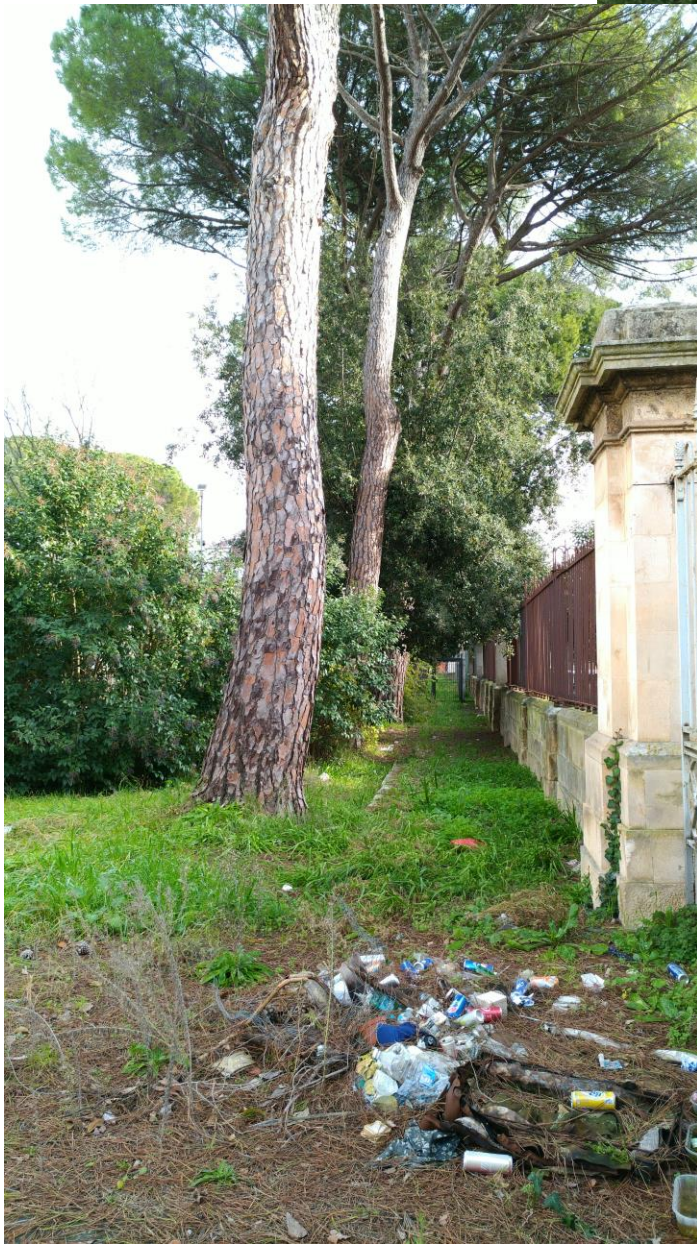








47

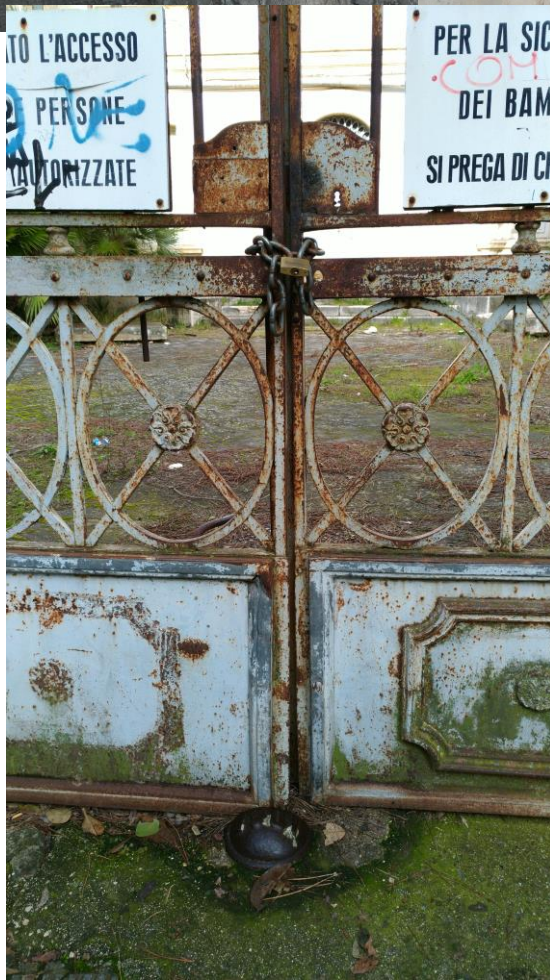


48





49



50

51

CONSISTENZA GIARDINO



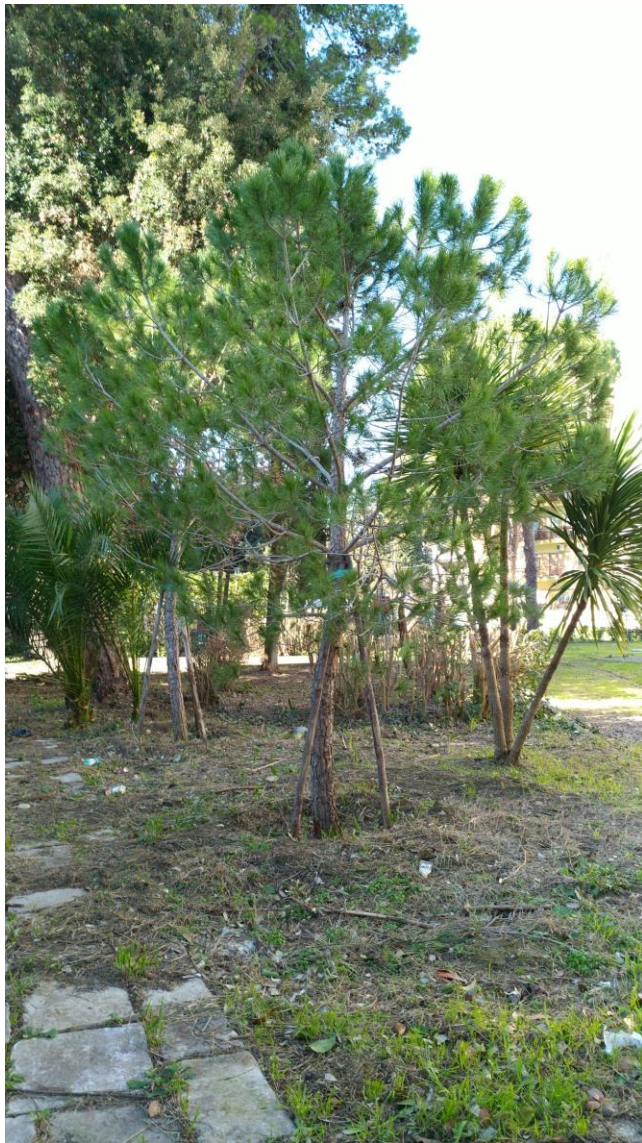
A







B1



B2





C



D



E



F



G



H



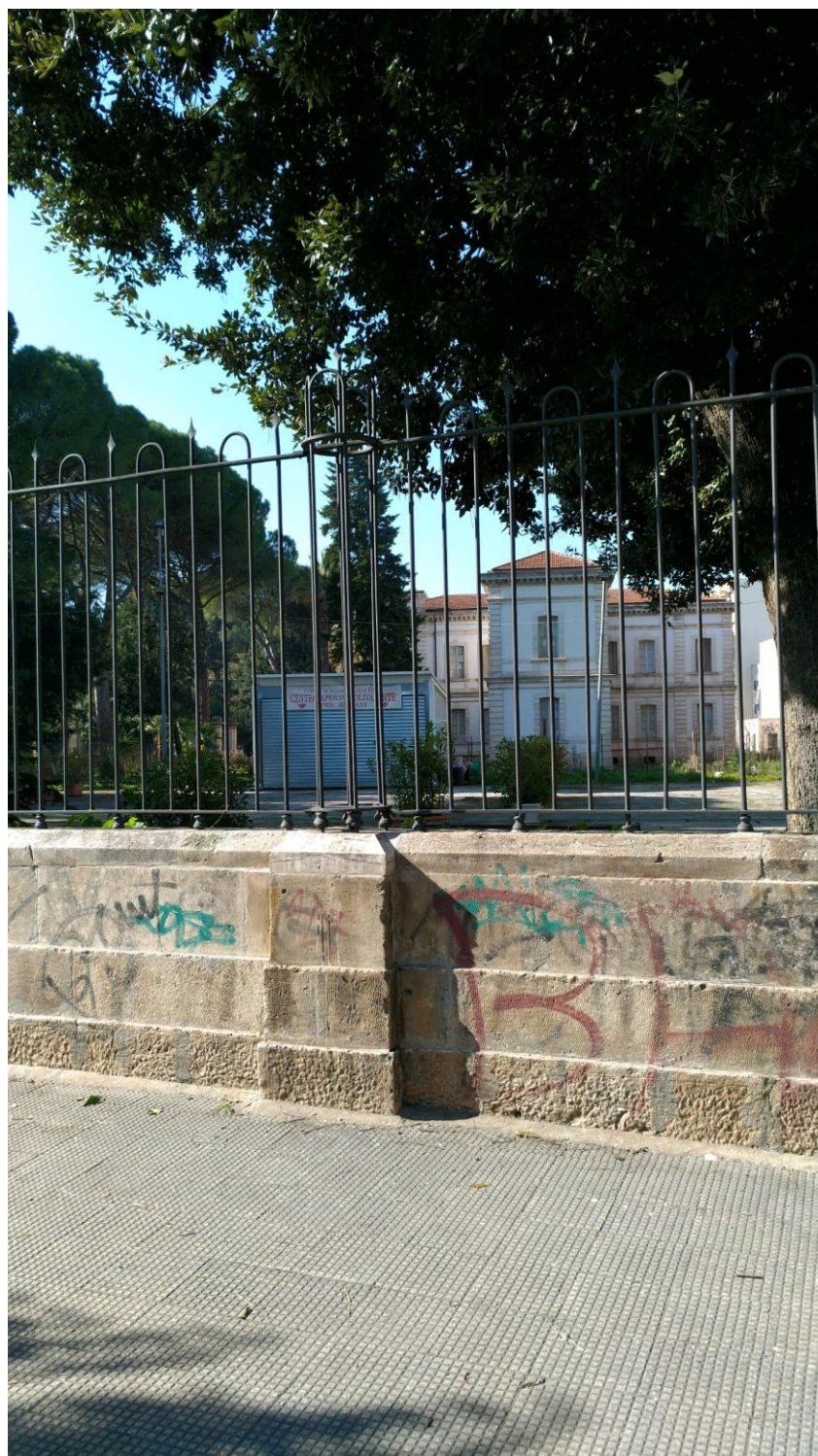








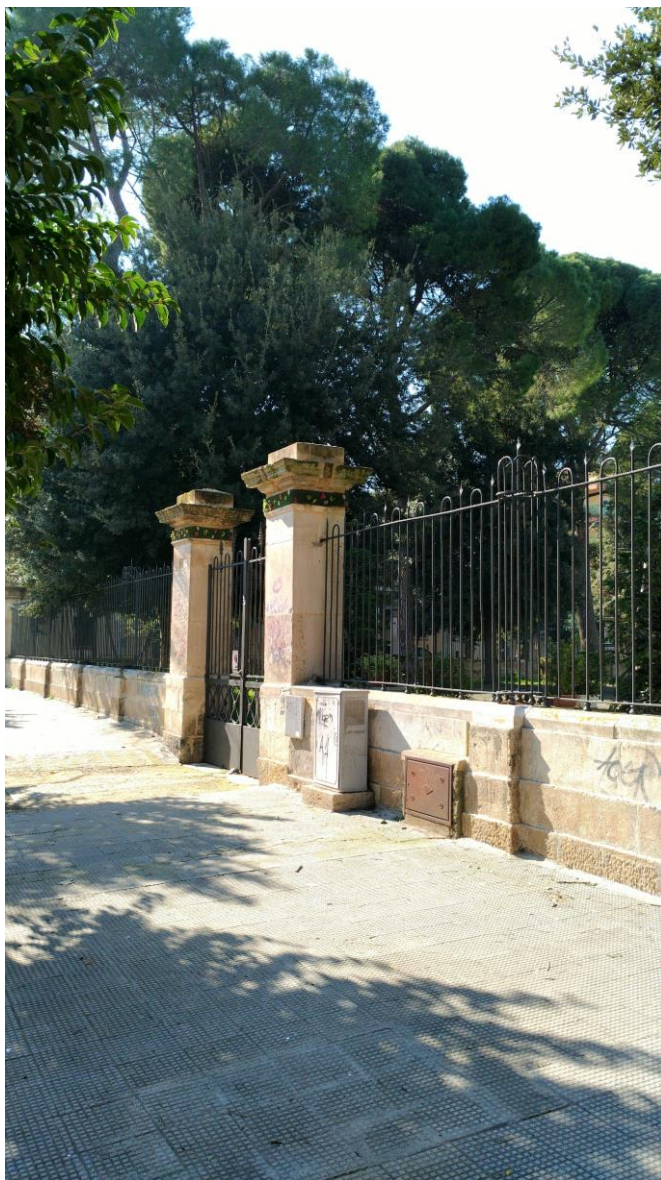
M







N



O